

Musivaria mosaics founded by the maestre mosaicists Silvia Angeletti and Donatella Garabello, the company was established in 1999 in the North-East of Italy.

The brand is well-known for its collaborations with street artists and for creating elaborate interpretations of artworks.

It also has extensive expertise in the restoration and production of architectural mosaics.

“The company specialises in restoring antique mosaics and developing industrial projects but is also involved in innovative contemporary projects, collaborating with artists/muralists to bring the antique technique of mosaic into the contemporary world of art.”

Fin DAC, 2021, “Afterglow Undertow”, London, Great Britain.

“Musivaria, the artistic duo of Maestre Mosaiciste Silvia Angeletti and Donatella Garabello, have worked with Snik since 2019, diligently recreating their works in the form of intricate, delicate mosaic.”

SNIK, 2021, “Ephemeral, a project by Snik”, London, UK.



SNIK

DIM: 130x80 cm

"Falling Girl" mosaic panel with glass venetian enamels, in collaboration with the duo Snik, October 2020.

www.snikarts.com



SNIK

DIM: 90x90 cm

"Taken away" mosaic panel with glass venetian enamels, in collaboration with the duo Snik, for their solo show "Ephemeral", at Crypt Gallery, London, October 2019.

www.snikarts.com



SNIK

DIM: 70x140 cm

“Transcend” mosaic panel with glass venetian enamels and marble, in collaboration with the duo Snik, for their solo show “Ephemeral II”, UK, June 2021.

www.snikarts.com



SNIK

DIM: 100x100 cm

"Cold Tenderness" mosaic panel with glass venetian enamels and marble, in collaboration with the duo Snik, UK, June 2021.

www.snikarts.com

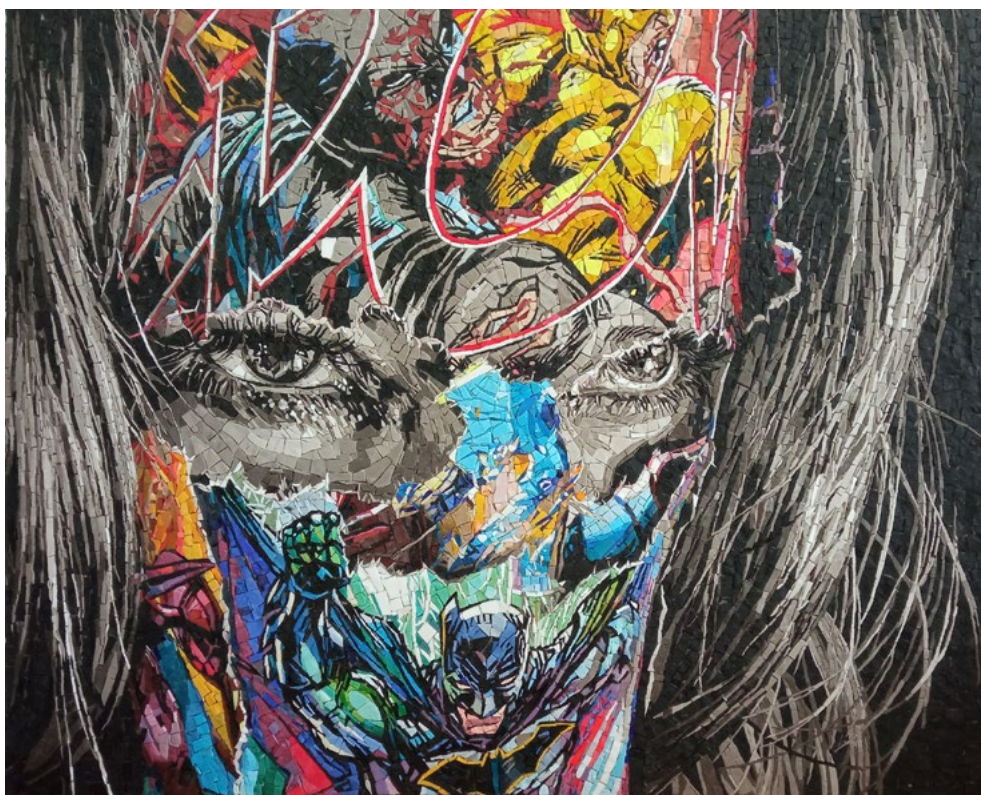


SANDRA CHEVRIER

DIM: 50x64 cm

“La cage où les gens pleurent”, mosaic panel with marble, ceramics and glass venetian enamels, in collaboration with Sandra Chevrier, 2017.

www.sandrachevrier.com



SANDRA CHEVRIER

DIM: 100x74,5 cm

“La cage et grondement du Tonnerre”, mosaic panel with black marble and glass venetian enamels, in collaboration with Sandra Chevrier, 2022.

www.sandrachevrier.com



MARTIN WHATSON

DIM: 100x100 cm

"Hardcore Angel" mosaic panel with glass venetian enamel and lime, in collaboration with Martin Watson, 2016.

www.martinwhatson.com



MARTIN WHATSON

DIM: 100x100 cm

“Make Love” mosaic panel with glass venetian enamel and lime, in collaboration with Martin Watson, for his solo show “Revive”, at Rex-Romae Gallery, Los Angeles, 2017.

www.martinwhatson.com



MARTIN WHATSON

DIM: 100x100 cm

“The Son of Man” mosaic panel
with glass venetian enamel and lime,
in collaboration with Martin Watson,
for his solo show “Revive”, at Rex-Romae
Gallery, Los Angeles, 2017.

www.martinwhatson.com

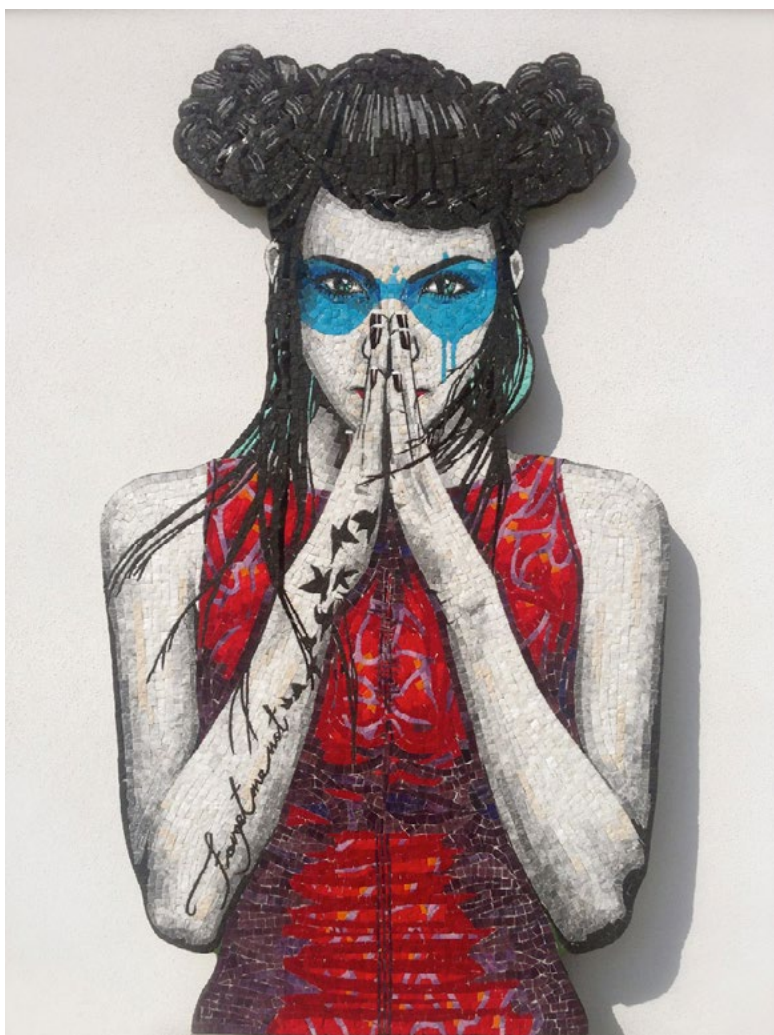


MARTIN WHATSON

DIM: 60x62 cm

“Toucan” mosaic with glass venetian enamel and lime, in collaboration with Martin Watson, 2021.

www.martinwhatson.com



FIN DAC

DIM: 66x112 cm

“Vergiss”, mosaic panel with marble and glass venetian enamel, in collaboration with Fin DAC for his solo show “The Nadeshiko” at C.A.V.E. Gallery, Venice Beach, CA, U.S.A. 2015.

findac.tumblr.com



FIN DAC

DIM: 125x155 cm

“Varennnes” mosaic panel with glass venetian enamels and marble, in collaboration with Fin DAC, for his solo show “Afterglow Undertow”, London, UK, October 2021.

findac.tumblr.com



LOUIS MASAI

DIM: 90x90 cm

“Elephants” mosaic panel with glass venetian enamel and lime, in collaboration with Louis Masai, for his solo show “Conservation Conversation”, at Next Street Gallery, Paris, June 2019.

www.louismasai.com



LOUIS MASAI

DIM: 70x70 cm

“No Strings Attached” mosaic panel with glass venetian enamel and lime, in collaboration with Louis Masai, for his solo show “Missing”, at Crypt Gallery Euston, London, 2018.

www.louismasai.com



PEZ

DIM: 50x75,5 cm

“Hope Scotch” mosaic panel with glass venetian enamel and black marble, in collaboration with Pez, 2018.

www.pez-artwork.com



INKIE

DIM: diam 50 cm

“Medusa”, mosaic panel with glass venetian enamel and gold, in collaboration with Inkie, 2012.

www.inkie.bigcartel.com



ALICE

DIM: 50x50 cm

“Eva”, mosaic panel with marble and glass venetian enamel, in collaboration with Alice Pasquini, 2015.

www.alicepasquini.com



KEROTOO

DIM: 50x50 cm

Mosaic panel with glass venetian enamel
and mortar, in collaboration with Kerotoo, 2014.

instagram francesco kerotoo(@_kerotoo_)



2501

DIM: 40x30 cm

Mosaic with glass venetian enamel and gold,
in collaboration with Never2501. Italy, 2017.

www.2501.org.uk



2501

DIM: 80x15x33 cm

Mosaic sculpture with glass venetian enamels and black marble mosaic, in collaboration with Never2501 for his solo show "Nomadic Experiment, on the brink of disaster", at Wunderkammern, Rome, 2015.

www.2501.org.uk



ANDRECO

DIM: 75x50 cm

Mosaic panel with marble, in collaboration with Andreco, for "Walking, arte in cammino", Tolmezzo (Ud) 2016 mosaic on show at Torre Reythmbergher, Tolmezzo (Ud), August 2016.

www.andreco.org



CIREDZ

DIM: 79,5x40 cm

Mosaic panel with grey marblescale,
in collaboration with Ciredz, 2016.

www.ciredz.com



ALFANO

DIM: 30x30 cm + 70x100 cm

“Arlecchino”, mosaic panel with marble and venetian enamels, in collaboration with Roberto Alfano, 2017.

www.alfanoalfano.com

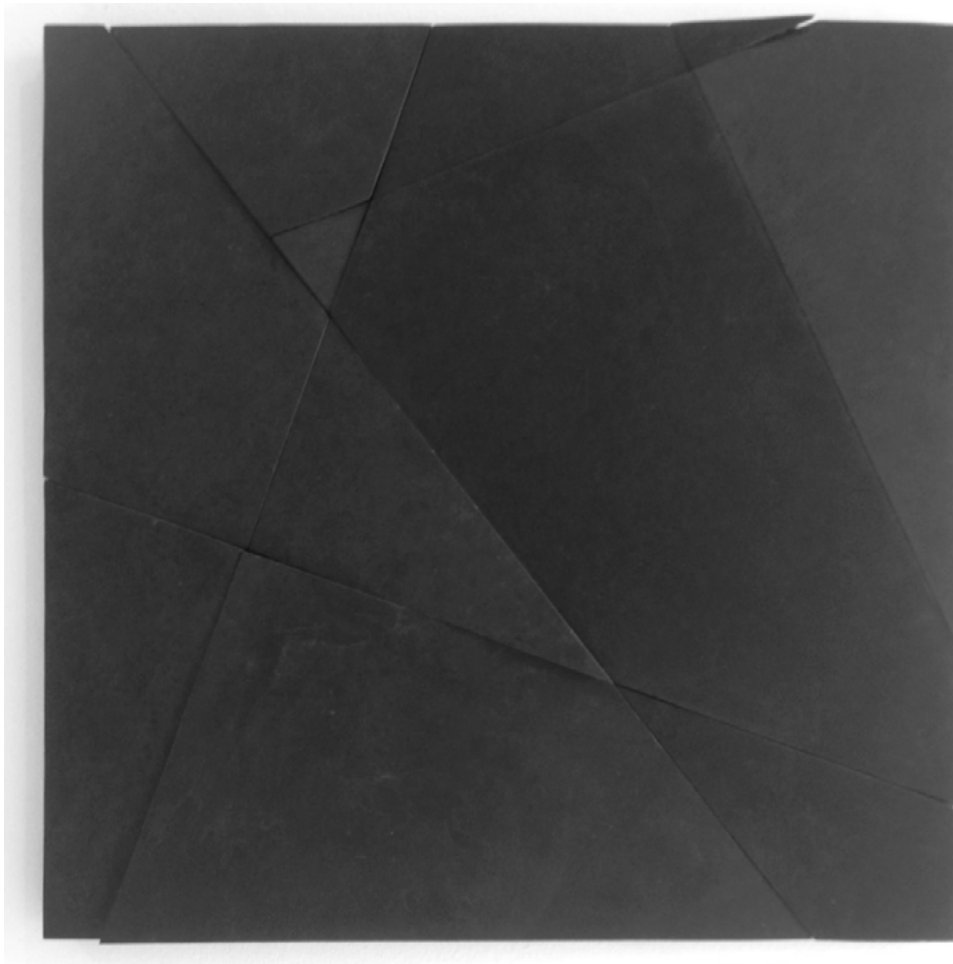


BARTOCCI

DIM: 50x50 cm

Mosaic panel with glass venetian enamel and gold tiles, "Nuova Messapia", in collaboration with Giorgio Bartocci, 2016.

www.giorgiobartocci.com



SODA

DIM: 50x50 cm

Gr_M, Mosaic panel with black Belgian marble, 3mm thickness, in collaboration with SODA, 2019.

www.flickr.com/photos/sodalan

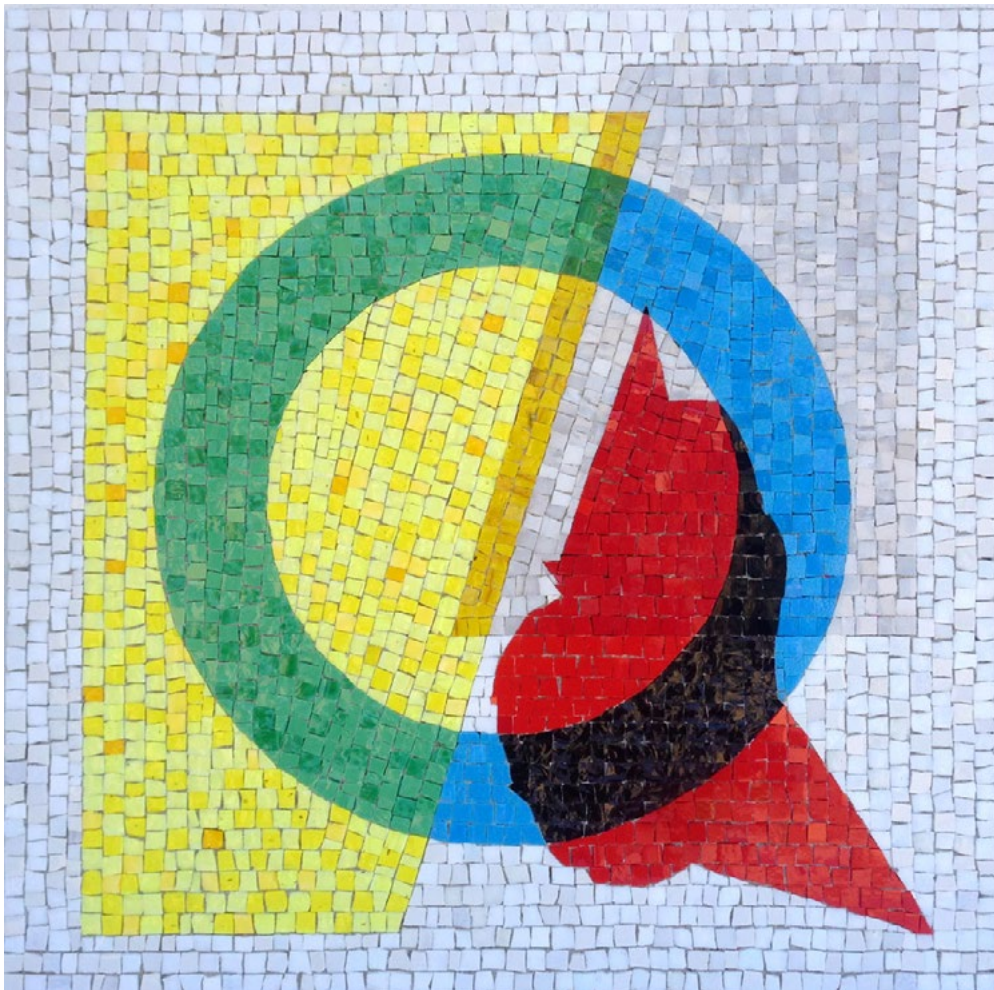


ALBERONERO

DIM: 3 pcs. 180x180 cm

Urban mosaic in marble, in collaboration with Alberonero: "Rosso Verona", 18 Variations of marble, urban project at Piazza Bra, Verona, Italy, curated by ZOE, during Art Verona 2016.

www.alberonero.it

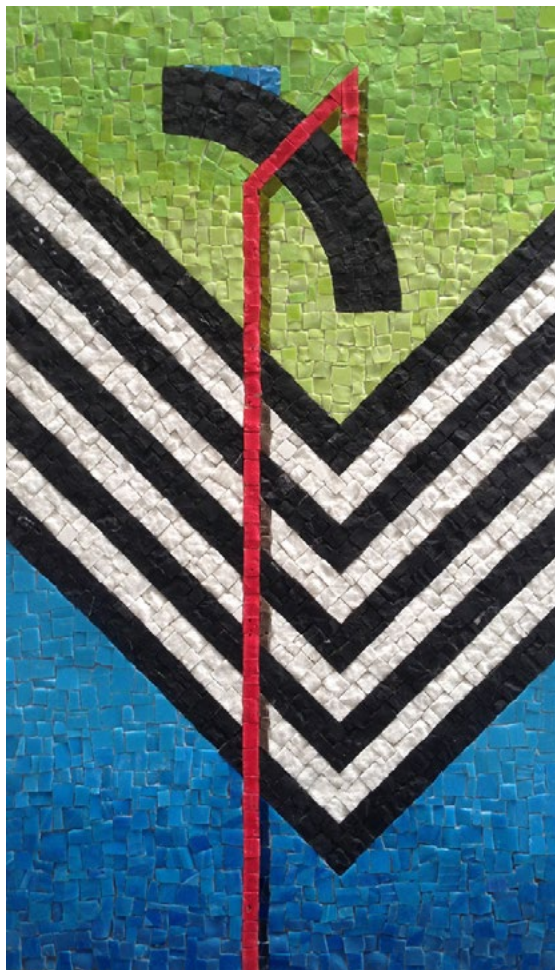


ELIAN

DIM: 50x50 cm ca.

Mosaic panel with glass venetian enamel,
in collaboration with Elian, 2016.

instagram ELIAN(@elian_)

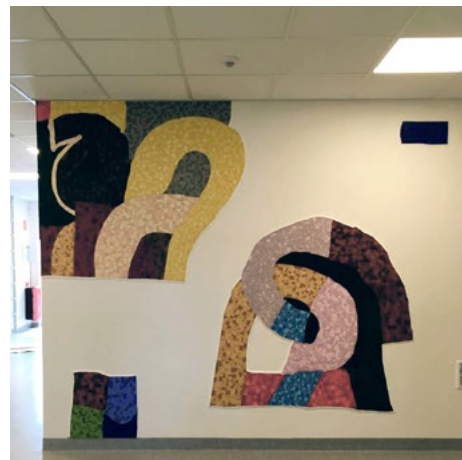


SEIKON

DIM: 35x63 cm

Mosaic panel with marble and glass venetian enamel, in collaboration with Seikon, 2016.

instagram Robert SEIKON(@seikon87)



MATTIA LULLINI

DIM: 6,30 sq. m.

“Ellipster”, wall mosaic with glass venetian enamel, in collaboration with Mattia Lullini. Public commission for the new primary school, Gothenburg, Sweden, 2018.

instagram (@mattialullini)

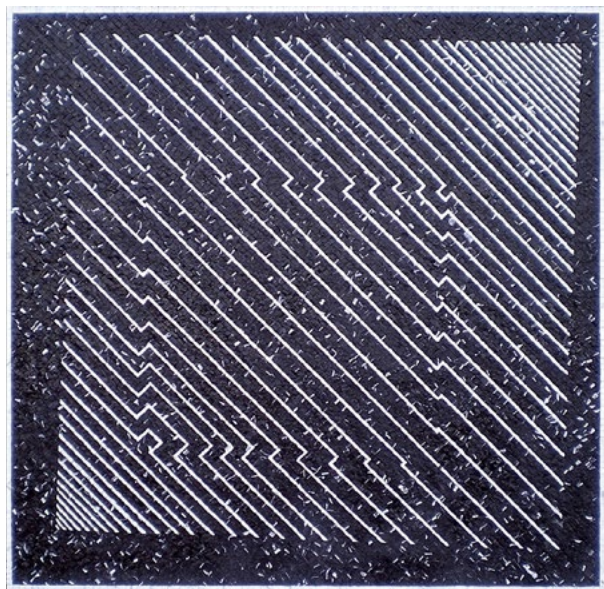


MATTIA LULLINI

DIM: 6,30 sq. m.

“Ellipster”, wall mosaic with glass venetian enamel, in collaboration with Mattia Lullini. Public commission for the new primary school, Gothenburg, Sweden, 2018.

instagram (@mattialullini)



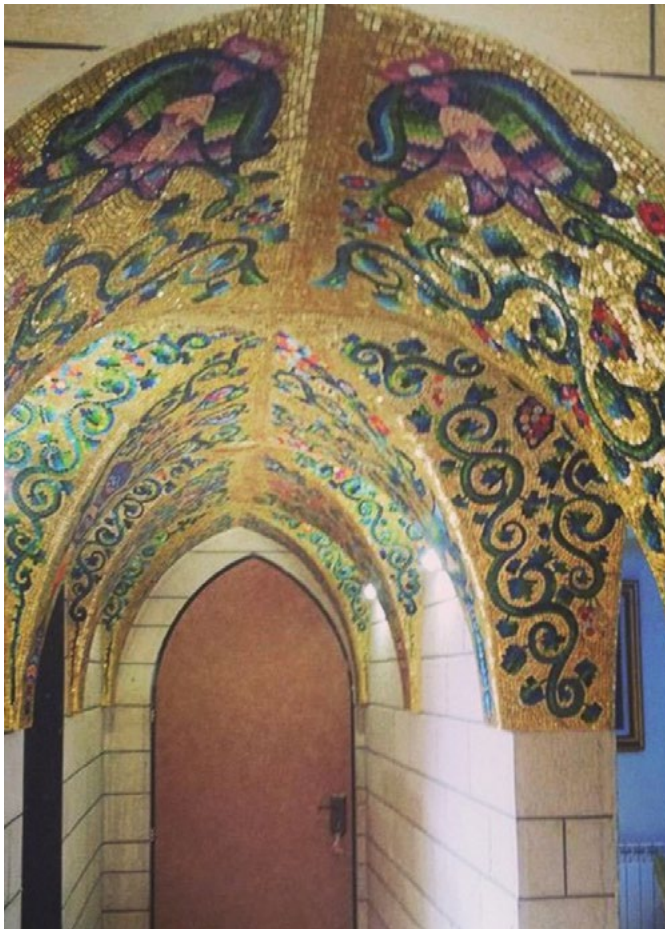
ARCADA

furniture & interior design studio

DIM: 100x100 cm b/w

"Optical", b/w mosaic panels with marble, 2011.

instagram (@arcadadubai)



JERICO

DIM: 10 sq. m.

Mosaic wall decoration with venetian enamels and gold, in collaboration with Mosaic Centre Jericho. Sketch and artistic direction by Silvia Angeletti.

www.mosaiccentrejericho.com
www.musivaria.it



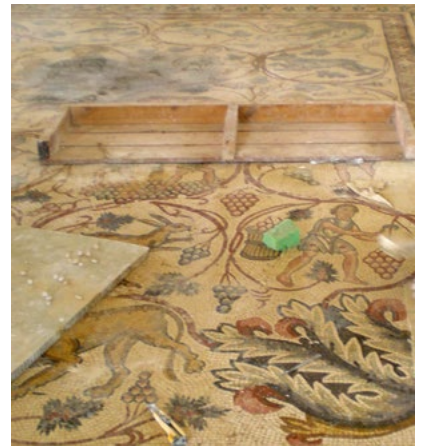
YACHT

DIM: 15 sq. m.

Copies of antique tunisian mosaics with marble. Decoration and covering of master lounge, 5 bathrooms, showers, backsplash decorations and stairs.

For Maiora, Viareggio, Italy.

www.maiora.it



RESTORATION JORDAN

Restoration of the mosaic floor of the
Church of SS Lot and Procopius, Kirbath
Al-Mukhayyat. Bilad Al-Sham Project, Jordan.
2006/2007



RESTORATION FRANCE

DIM: 100x100 cm

Restoration of the mosaics dated 1880 of the facade South, Cathedrale de La Major, Marseille, France. In collaboration with Atelier Morisse Marini, 2021.

Instagram (@ateliermorissemarini)
(@margotmorissemarini)

PARTICIPATIONS IN EXHIBITIONS IN COLLABORATION:

2021, Fin DAC, for his solo show “Afterglow Undertow”, London, UK.

2021, Background Bob and Martin Watson, for “Background Bob Project”, Colchester, UK.

2021, Viva con Agua Arts de Sankt Pauli, for 100 Blickwinkel 2021, Art Creates Water, Millerntor Gallery, Hamburg, DE.

2021, Snik, for their solo show “Ephemeral II”, secret location, London, UK.

2019, Snik, for their solo show “Ephemeral”, at Crypt Gallery, London, UK.

2019, SSOSVA, group show “Take Over”, curated by China Girl, at Wien Museum, Wien, AU.

2019, Louis Masai, for his solo show “Conservation Conversation”, at Next Street Gallery, Paris, FR.

2019, SODA, for Ground Effect Gallery, Paris, FR.

2018, Louis Masai, for his solo show “Missing”, at Crypt Gallery Euston, London, UK.

2017, Martin Watson, for his solo show “Revive”, pop-up exhibition at Rex-Romae Gallery, Los Angeles, USA.

2016, Alberonero, for “Rosso Verona”, 18 Variations of marble, urban project at Piazza Bra, Verona, IT.

2016, Andreco, for his solo show “Walking, arte in cammino”, Tolmezzo, Ud, IT.

2015, 2501, for his solo show “Nomadic Experiment, on the brink of disaster”, at Wunderkammern, Rome, IT.

2015, Fin DAC, for his solo show “The Nadeshiko” at C.A.V.E. Gallery, Venice Beach, CA, USA.

2015, Alice Pasquini, for Moniker Art Fair, London, UK

2015, Alice Pasquini, for the group show Stanze Reinventing Renaissance Rooms, Temple University Art Gallery, Rome, IT

PUBLICATIONS:

Fin DAC, “Afterglow Undertow”, West Contemporary (Beautiful Crime) Ltd, London, UK. 2021.

SNIK, “Ephemeral a project by SNIK”, Bio Editions LTD, London, UK. 2021

Background Bob, “Background Bob & his amazing friends”, Background Bob, Taylor Brothers, Bristol, UK. 2020, in support of Colchester and Ipswich Hospitals Charity.

S. Flaim, “Il 2% per l’arte in provincia di Trento dal 2000 al 2010”, Provincia Autonoma di Trento Soprintendenza per i Beni Architettonici, Provincia autonoma di Trento, 2012.

O. Hamdan, C. Benelli, H. Nur el-Din, “Holy Land mosaics, a bridge of tesserae across the Mediterranean”, Studio Alpha, Al-Ram, Jerusalem. 2011, supported by European Union.

O. Hamdan, C. Benelli, H. Nur el-Din, “The umayyad mosaic of the Dome of the Rock come closer”, Studio Alpha, Al-Ram, Jerusalem. 2009, supported by European Union.

O. Hamdan, C. Benelli, “Bilad al- Sham: training course in mosaic conservation 2006/07” Studio Alpha, Al-Ram, Jerusalem. 2008,